

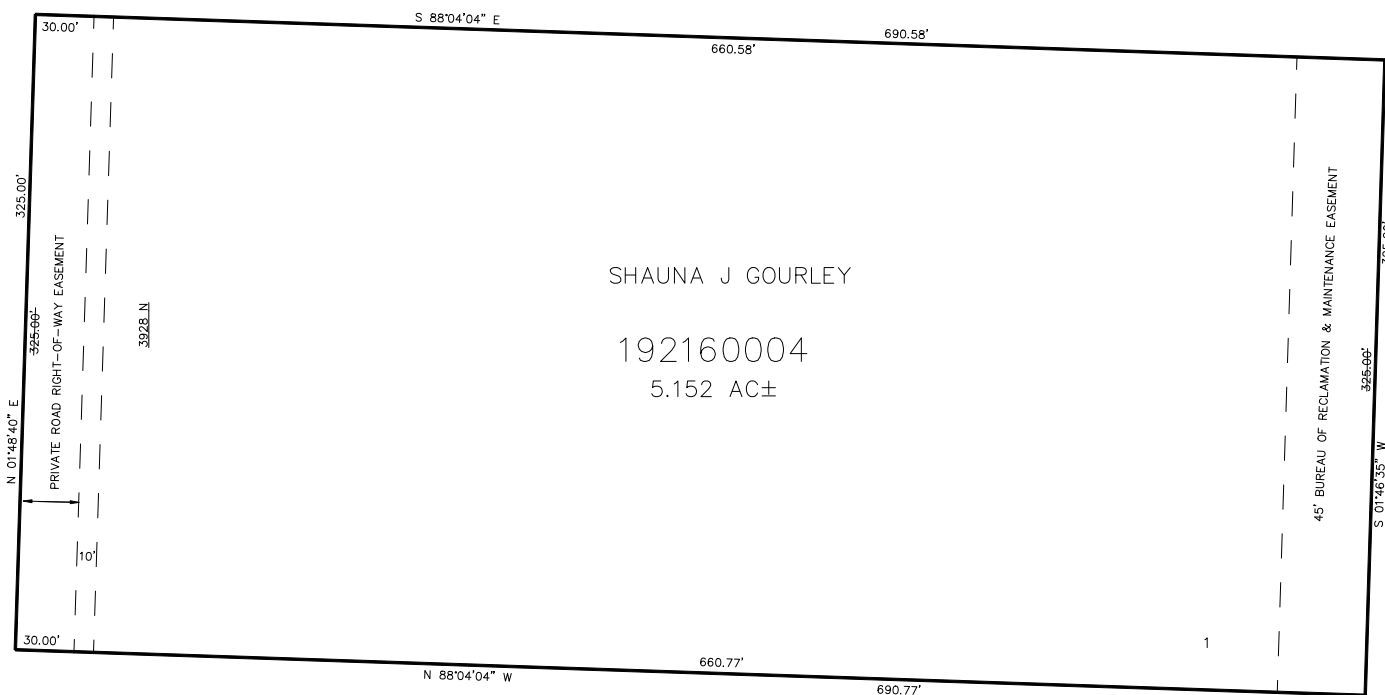
PART OF THE N.1/2, OF SECTION 22, T.7N., R.2W., S.L.B. & M.
DENNIS SPENCER ONE LOT SUBDIVISION

IN WEBER COUNTY
SCALE 1" = 50'

TAXING UNIT: 19

SEE PAGE 10

3175 WEST STREET



SEE PAGE 10

FOR COMPLETE ENG DATA SEE
ORIGINAL DEDICATION PLAT IN
BOOK 61, PAGE 63 OF RECORDS.

10' UTILITY & DRAINAGE EASEMENTS EACH
SIDE OF PROPERTY LINES AS INDICATED
BY DASHED LINES EXCEPT AS OTHERWISE
SHOWN.